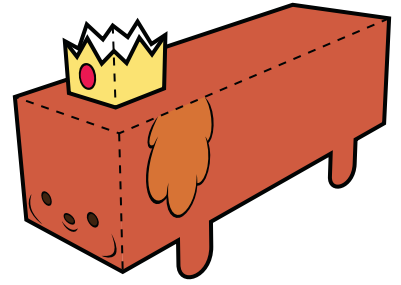
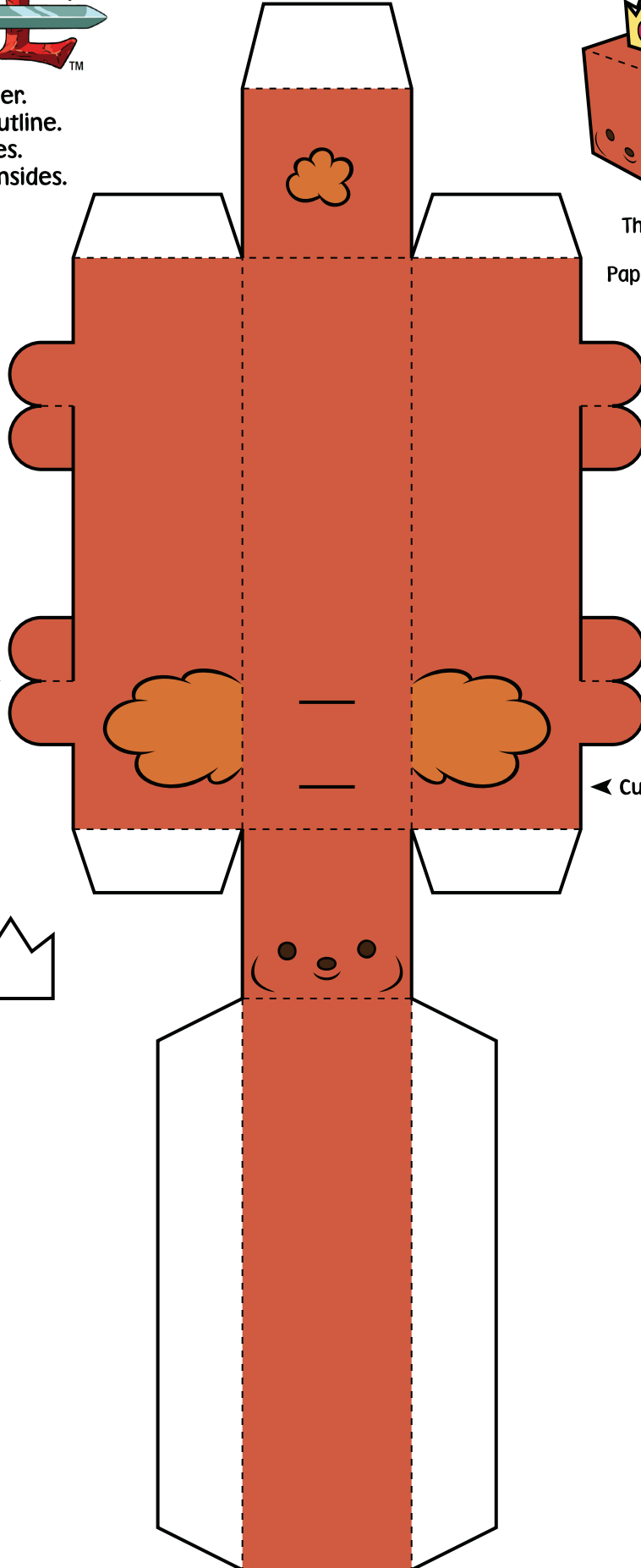




Print template on sturdy paper.  
Cut carefully along solid black outline.  
Score and fold on dotted lines.  
Tape or glue folded tabs to the insides.

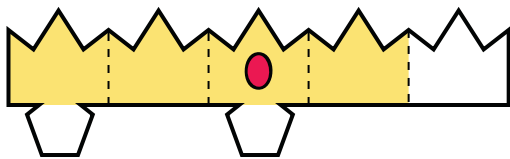


This is what your assembled  
HOT DOG PRINCESS  
Paper Foldable should look like!



Tape leg sides together ▶

◀ Cut slits on top



Assemble crown and insert  
tabs into slits on top