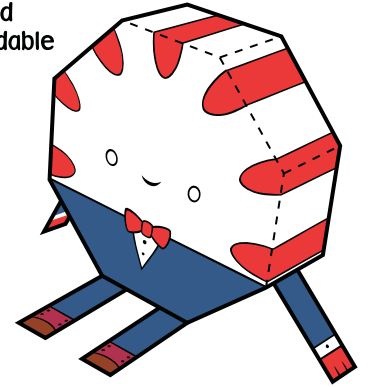


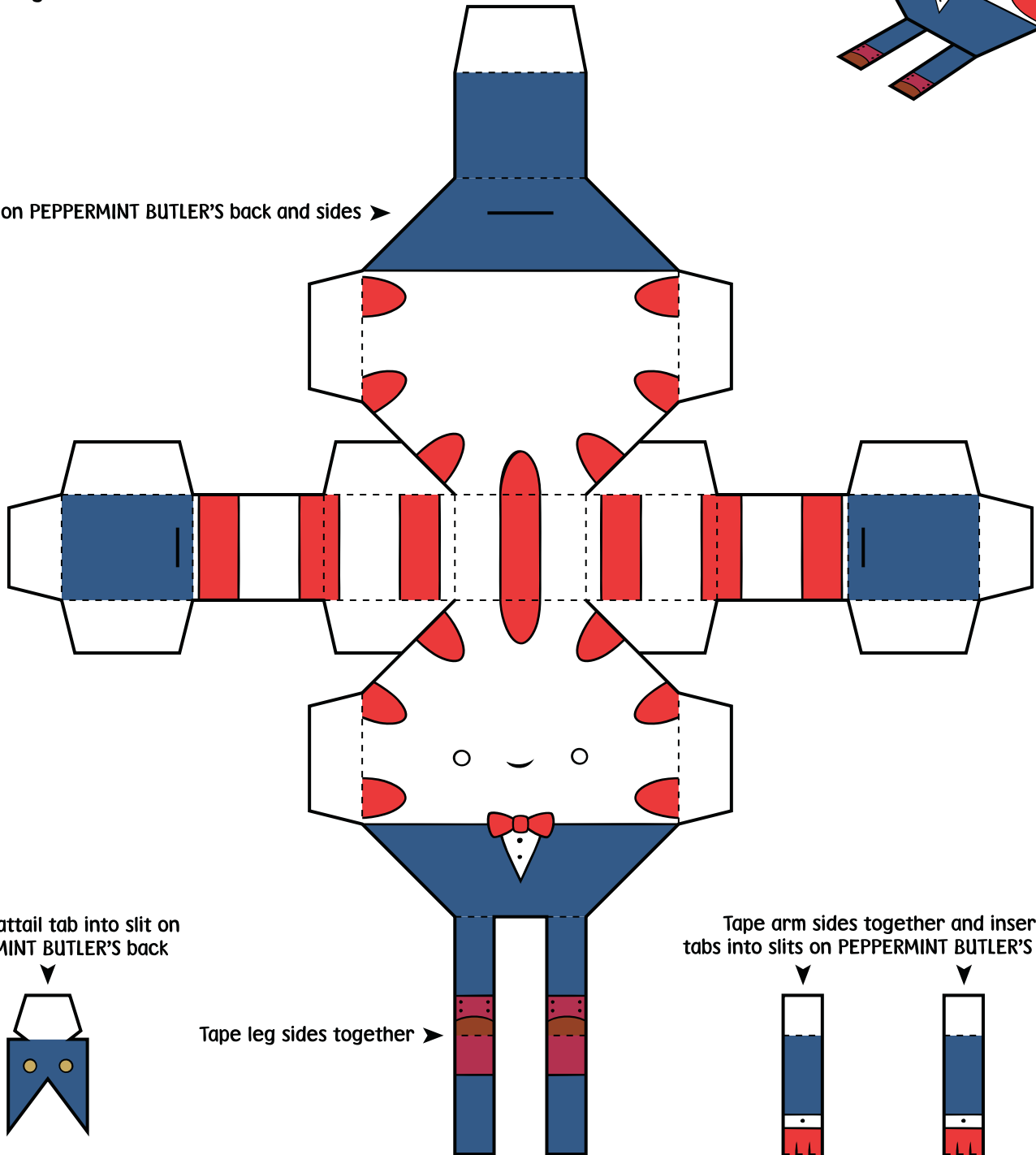


This is what your assembled PEPPERMINT BUTLER Paper Foldable should look like!

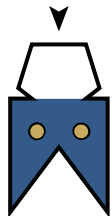


Print template on sturdy paper.  
Cut carefully along solid black outline.  
Score and fold on dotted lines.  
Tape or glue folded tabs to the insides.

Cut slits on PEPPERMINT BUTLER'S back and sides ➤



Insert coattail tab into slit on PEPPERMINT BUTLER'S back



Tape leg sides together ➤

Tape arm sides together and insert tabs into slits on PEPPERMINT BUTLER'S sides

