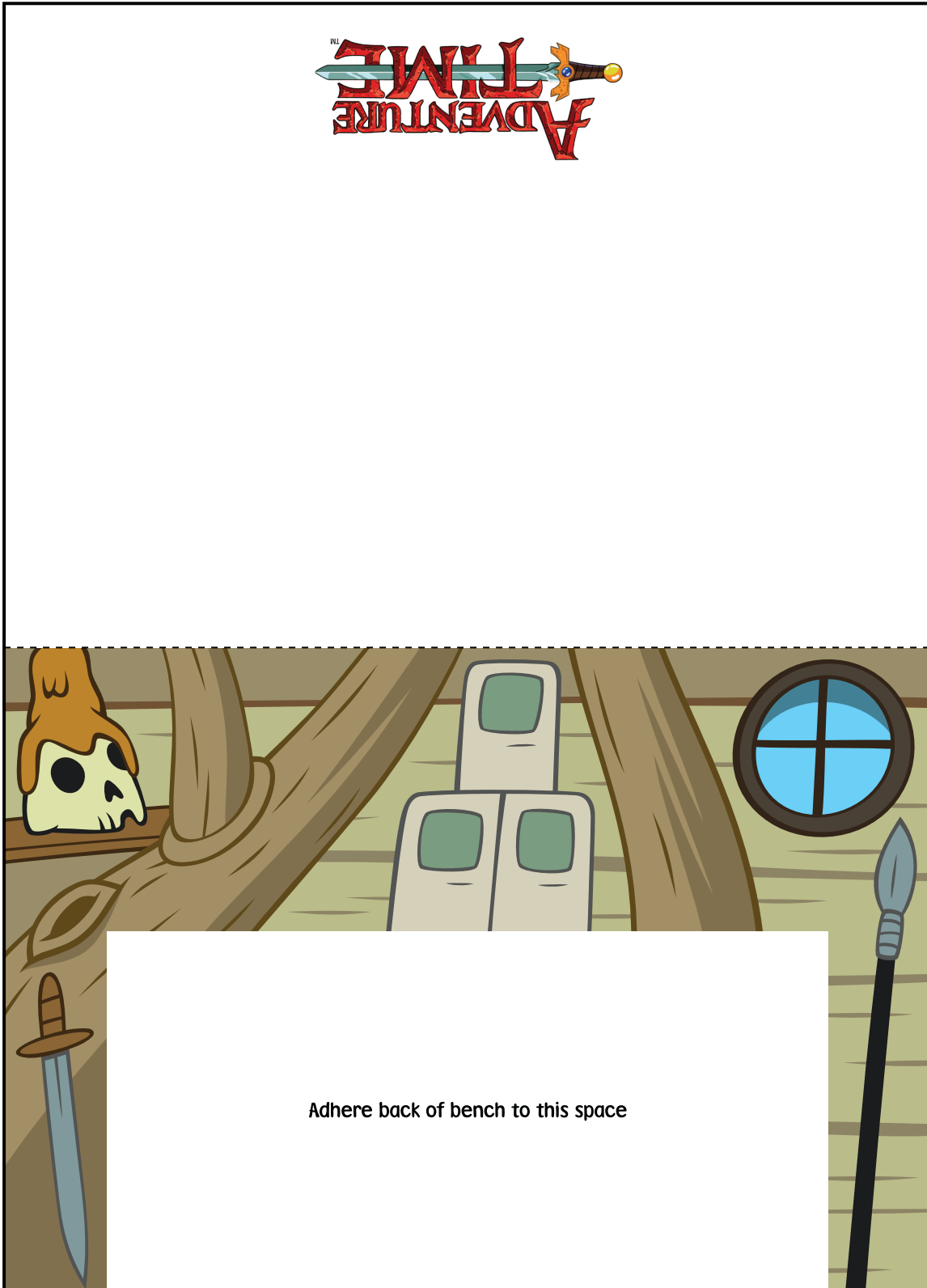


ADVENTURE TIME

Print template on sturdy paper.
Cut carefully along solid black outline.
Score and fold on dotted lines.
Tape or glue folded tabs to the insides.



This is what your assembled
TREE HOUSE SET
Paper Foldable should look like!

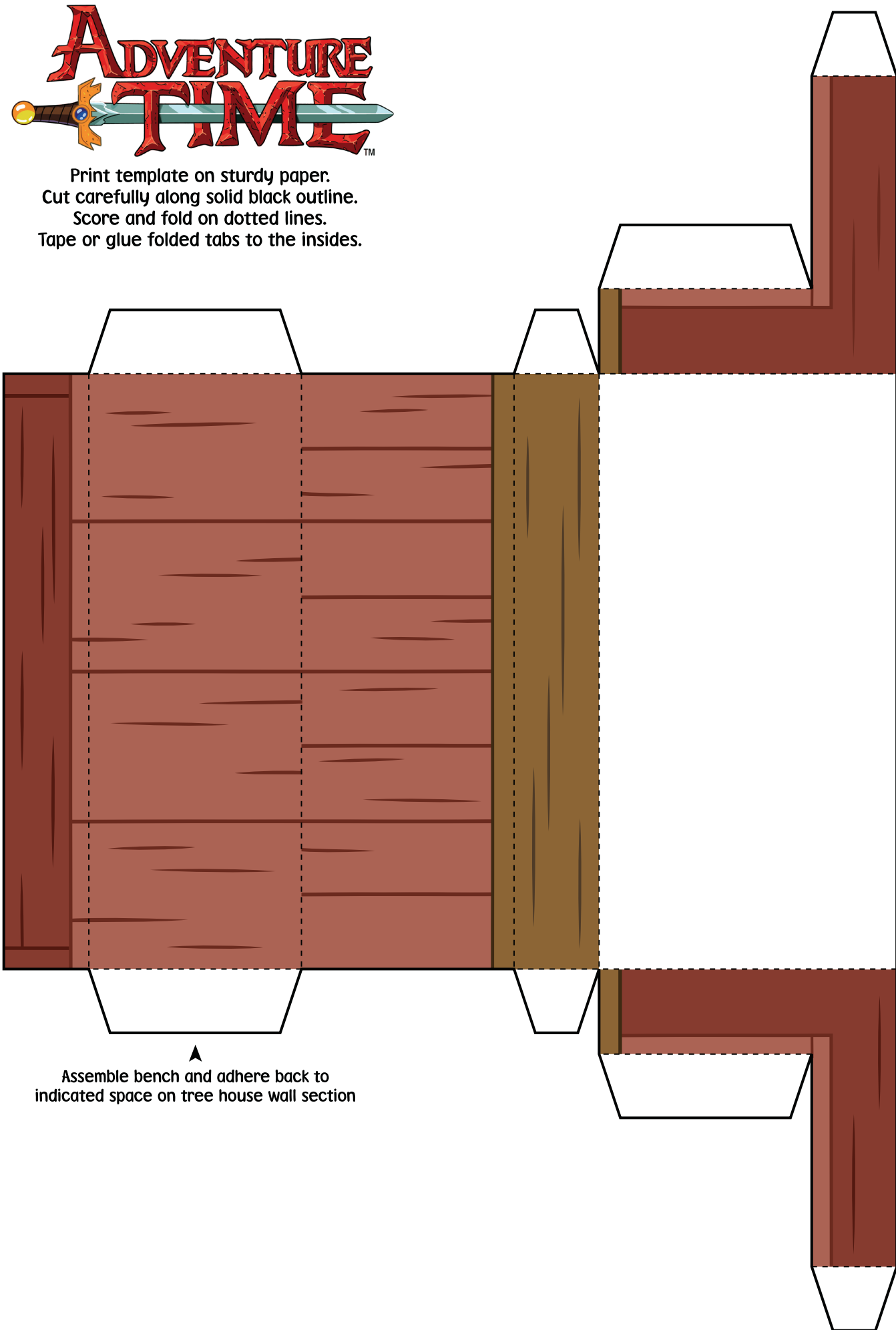


← Tape sides together

Adhere back of bench to this space



Print template on sturdy paper.
Cut carefully along solid black outline.
Score and fold on dotted lines.
Tape or glue folded tabs to the insides.



▲
Assemble bench and adhere back to
indicated space on tree house wall section